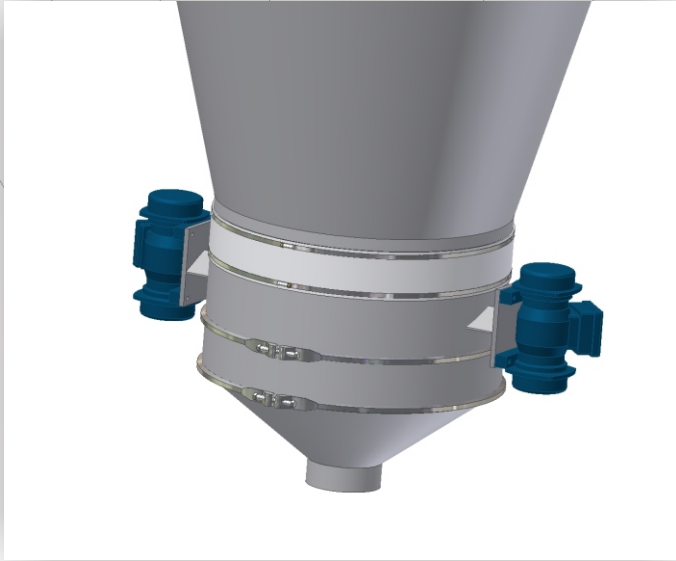
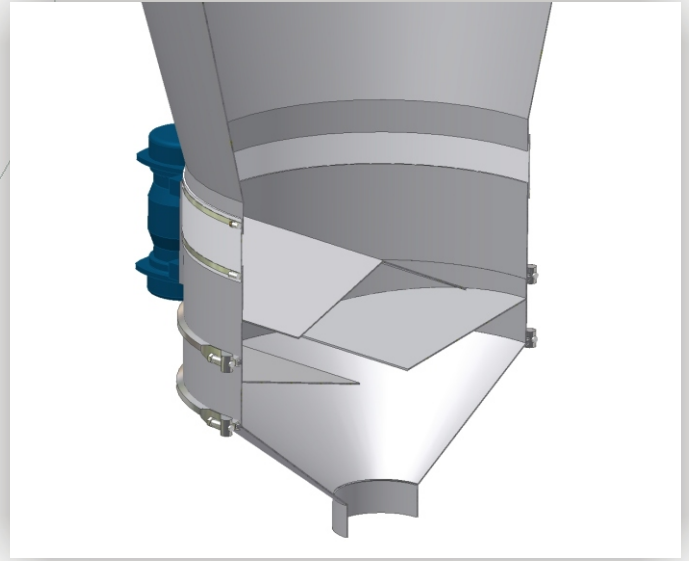


Silo Tray Feeder

"EASY" Clean/Access



Silo Tray - Full Assembly



Silo Tray - Cross Section of the Removable 3 sections

Silo Tray Feeder

The Brabender Silo Tray Feeder is a vibratory discharge and proportioning device which is suspended from the bottom of silos and bins. Special hanger arms center the unit and allow horizontal vibration.

Unbalanced AC motors apply motion to the unit and control the discharge rate. For volumetric feeding applications a VFD is provided to vary the frequency of vibration. Amplitude is adjustable.

The operation method is independent from agitators and prevents compaction and ensures "First-in, First-out" discharge without bridging or particle deterioration.

Feed rates are repeatable, the unit is perfectly suited to feeding in pneumatic or mechanical conveying systems.

Typical applications include

- accurate controlled feed rate directly beneath a storage hopper.
- as the feed device for a loss-in-weight feeder.
- as a refill device for a loss in weight feeder where a controlled rate refill is required.

Brabender Technologie Inc. 6500 Kestrel Rd., Mississauga, Ontario L5T 1Z6
Tel: 905-670-2933 Fax: 905-670-2557

www.brabenderti.com

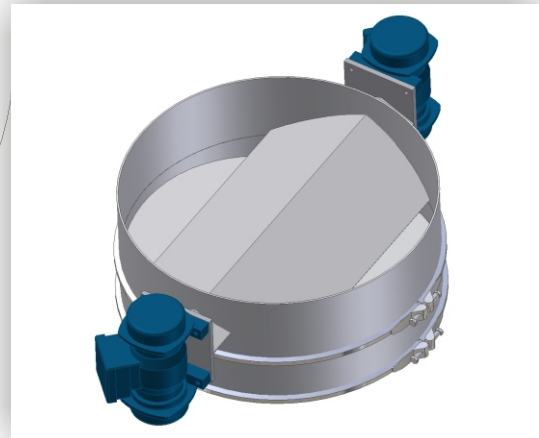


Silo Tray Feeder

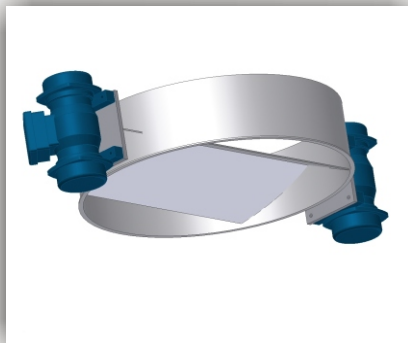
Easy Clean / Full Access



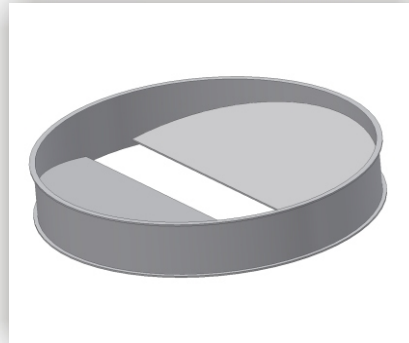
Outlet cone section
View of internal contact surfaces



Baffle section and feed tray section
access to top of baffle



Baffle section
access to baffle underside



Feed Tray section
access to top of trays



Feed Tray section
access to bottom of trays

Silo Tray - Easy Clean / Full Access

This design incorporates individual sections of the Silo Tray feeder secured by quick disconnect, grooved band clamps.

Procedure for disassembly and Cleaning:

- 1) Remove outlet cone section - secured by a quick disconnect clamp. This provides full access to the underside of the feed trays.
- 2) Disconnect and tilt the baffle section and feed tray section, loosen the band clamp on the flex connection, lift section off 3 flexible cables (4th flexible cable secures sections) tilt the sections 45 degree to 90 degree. This provides full access to the top side of the baffle and underside of the feed trays.
- 3) Disconnect and Tilt (or remove) the feed tray section. Remove the quick disconnect clamp between the baffle section and the feed tray section. One removable cable secures the tray section to the baffle section. This provides full access to the top and bottom sides of the baffle and feed trays.

Brabender Technologie Inc. 6500 Kestrel Rd., Mississauga, Ontario L5T 1Z6

Tel: 905-670-2933 Fax: 905-670-2557

www.brabenderti.com

