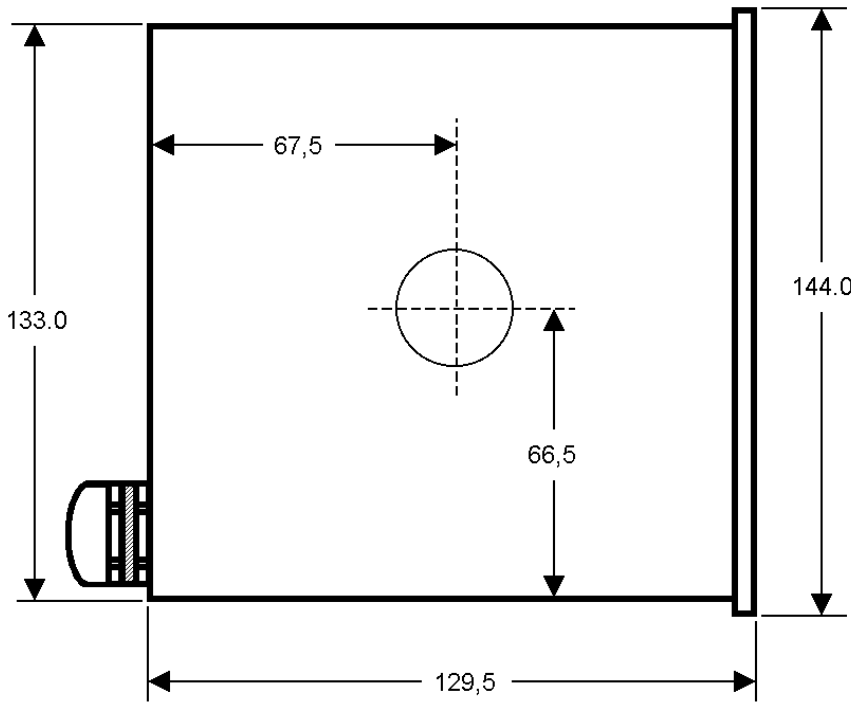


2.3 Housing

The instrument is accommodated in a stainless steel multi-purpose housing (288x144x130 mm) of protection class IP 65. It is suitable for table-top and wall mounting or panel installation. The instrument can be opened from the front. Keypad, display and board 2 form a unit with the front panel. The front bezel is 5 mm thick and held in position by means of 8 screws. For front panel installation a rectangular panel cut-out (278 mm x 134 mm) is required.



The cables are entered via 9 nickel-plated brass EMC glands on the housing rear. Unused cable glands must be closed with blind plugs (IP 65!). Except the external keyboard, all connections are made via internal screw terminal connectors. The cable glands for power connection, LC connection and Built-in are always provided. The remaining glands are divided as follows: 2x for the field bus option 1x for each of the three options. For connection of the options, three 16-pole connector blocks (2 terminal rows each with 8 terminals) are provided. The PR 1721/xx modules have got screw terminals. The socket for an external PC keyboard with DIN plug is accessible from the rear.

CAUTION: With external PC keyboard connected, protection type IP 65 is not met any more!

