

QUADRO

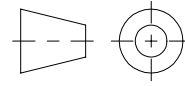


QUADRO ENGINEERING LP

613 COLBY DRIVE, WATERLOO, ONTARIO, CANADA

TITLE:

COMIL MODEL 197



DATE:

11 FEB 02

DRAWN BY:

TBK

SKETCH No.

QD-197-00-02395

NOTES

1) Standard Material of Construction:

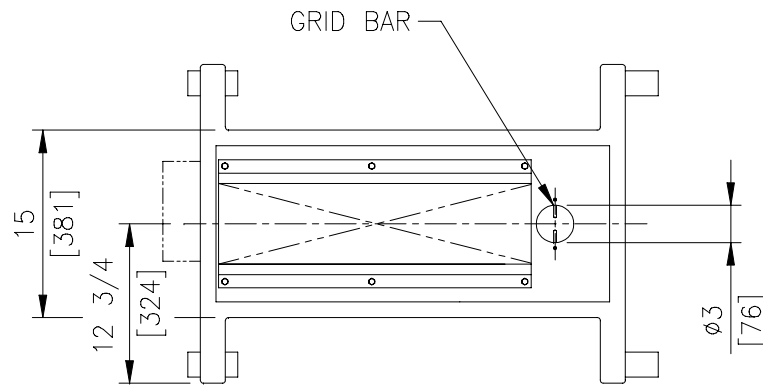
304 Stainless Steel

2) Standard Surface Finish
Contact Parts: 150 grit, welds ground flush.

Non-Contact Parts: No.8 Glass Bead Blast, welds not ground.

3) See quotation for exact machine specifications, infeed chute, discharge shroud and electrical options.

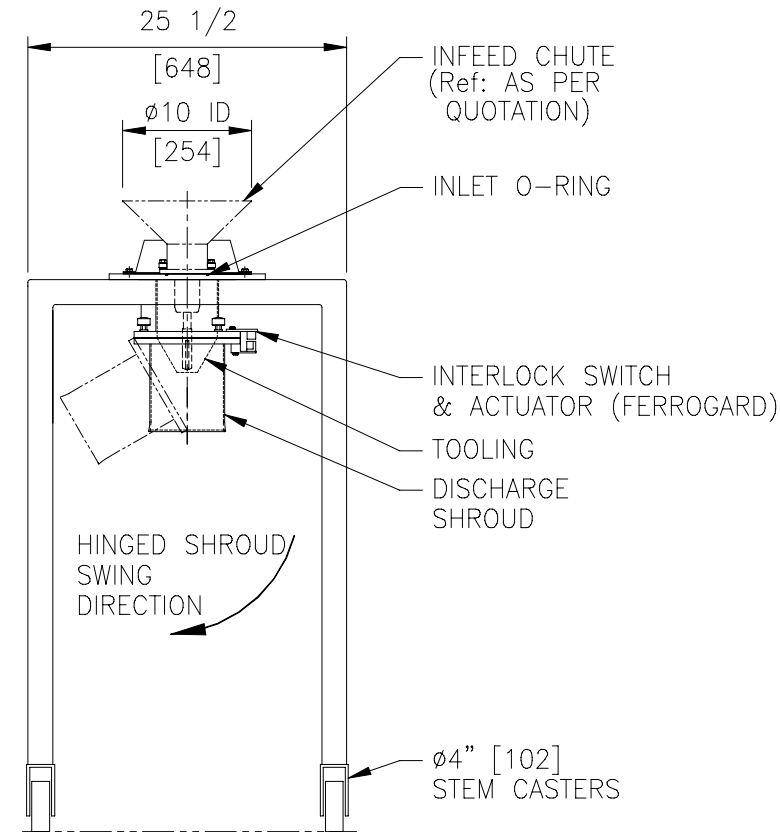
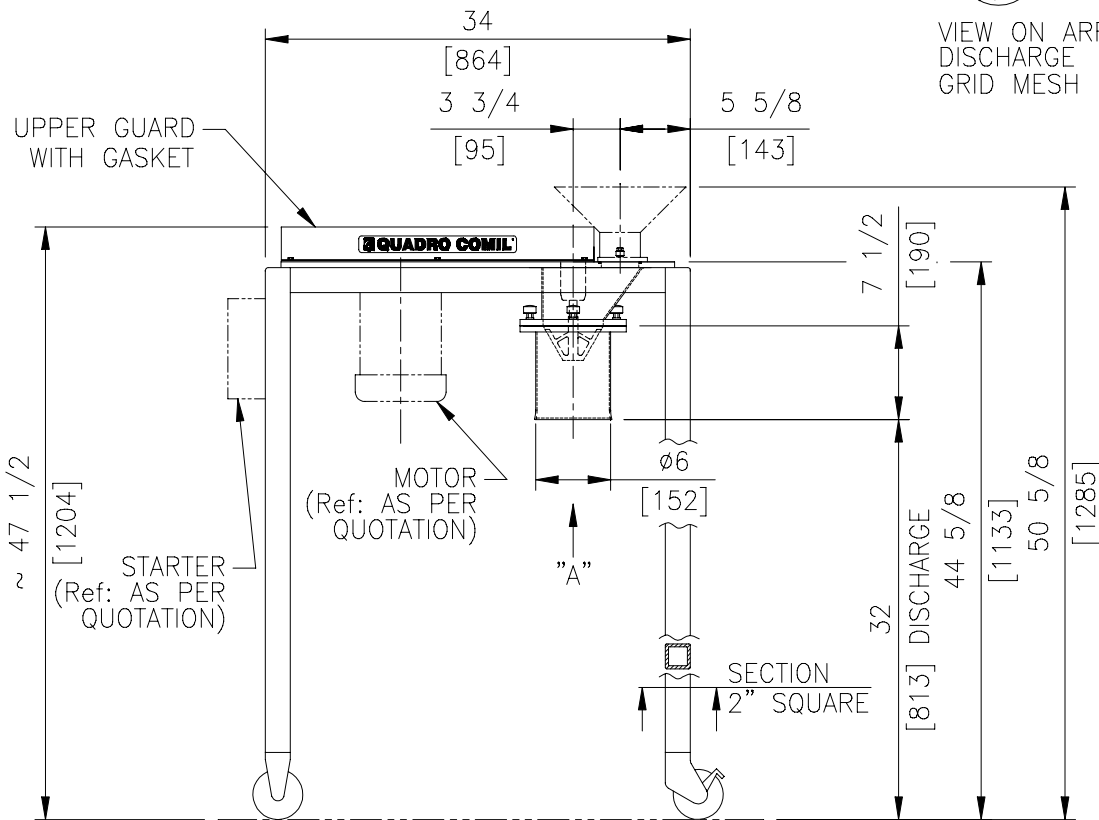
4) Dimensions are approximate and subject to change at time of order.



REV. A 10 FEB 06 ESB



VIEW ON ARROW "A"
DISCHARGE
GRID MESH



DIMENSIONS IN INCHES
[MILLIMETERS]

DO NOT SCALE